

CLASS-A

ALLEGRO OPEN ROAD



TIFFIN

Premium Paint System



Our eight-step, full-body paint system features premium grade paints sealed with three layers of clear coat with ultraviolet protection. An additional layer of high-performance film protects the front of the coach and select areas.



50TH ANNIVERSARY

NEW



Generation 9 Paint Schemes



G9 BARCELONA



G9 SUNLIT SAND



G9 NASA



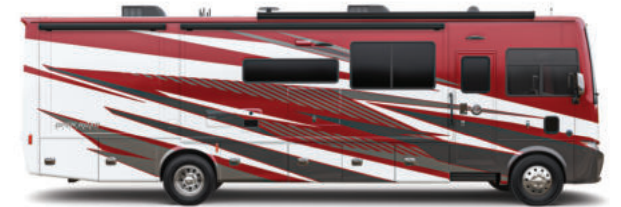
G9 WHITE MAHOGANY



G9 FROSTED GRANITE

NEW

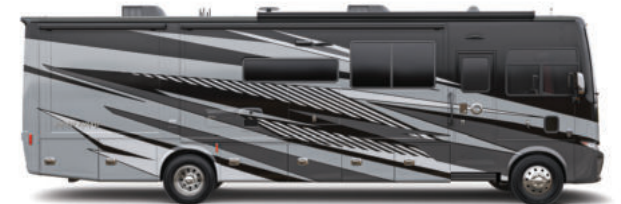
Generation 10 Paint Schemes



G10 BARCELONA



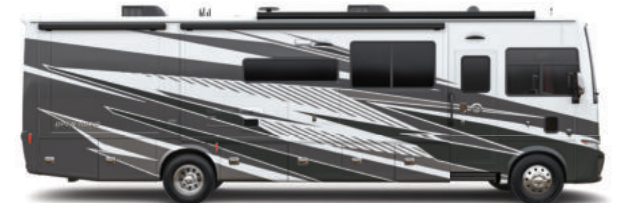
G10 SUNLIT SAND



G10 NASA



G10 WHITE MAHOGANY



G10 FROSTED GRANITE

NEW

Images shown are representations of paint layouts only and do not reflect all exterior features or options. Colors shown may slightly differ from colors on actual product.

Floor Plans



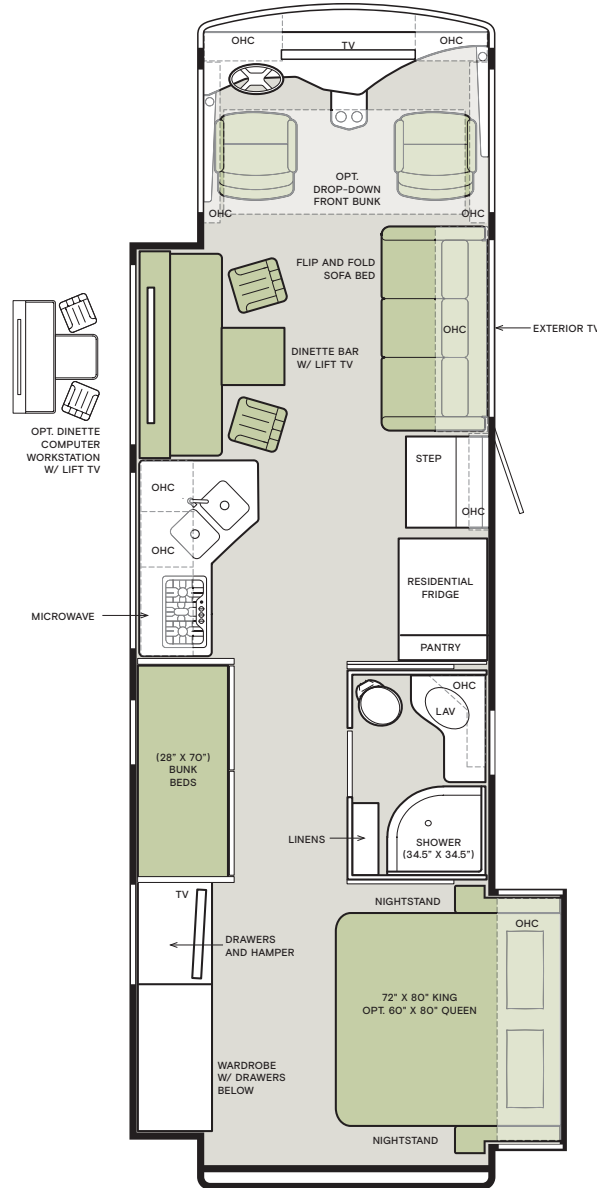
The design of every Open Road floor plan must meet four essential criteria: Maximum space, Optimal organization, Relaxation plus, and Elegant atmosphere. Tiffin's MORE Plans offer your family the most comfortable layout for life on the road.

If optional furniture combinations are selected, window locations may vary from diagram shown.

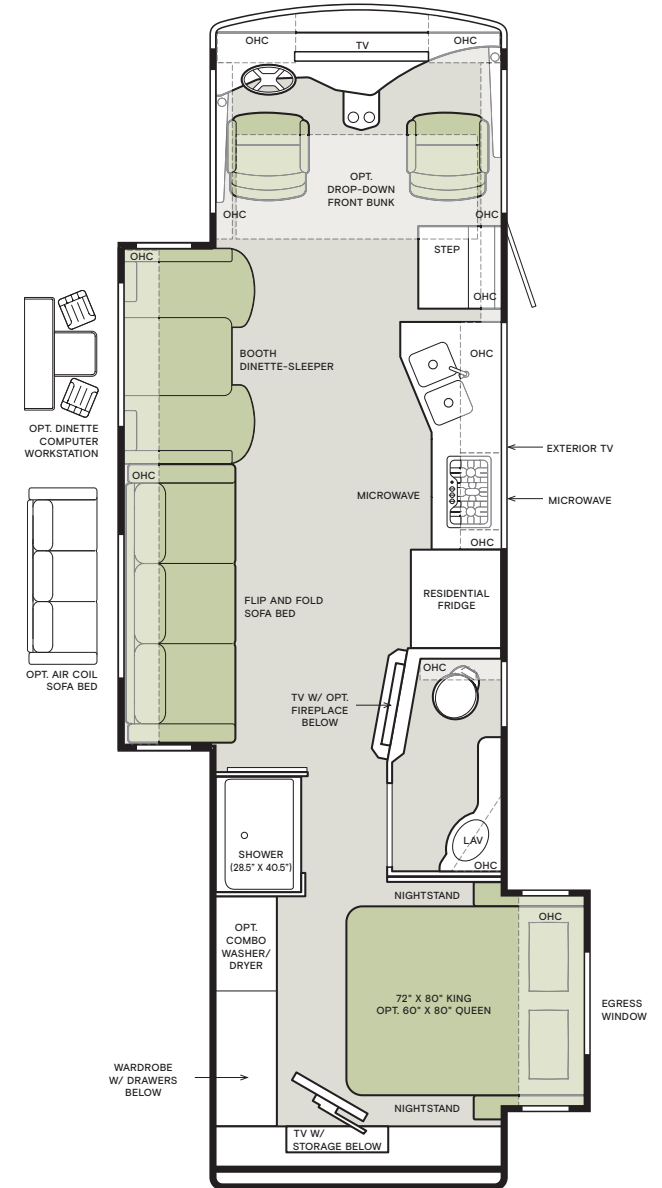
All options may not be available in every model. Because of progressive improvements and specifications, standard and optional equipment are subject to change without notice or obligation.

For a complete and up-to-date list of available options and specifications, visit tiffinmotorhomes.com.

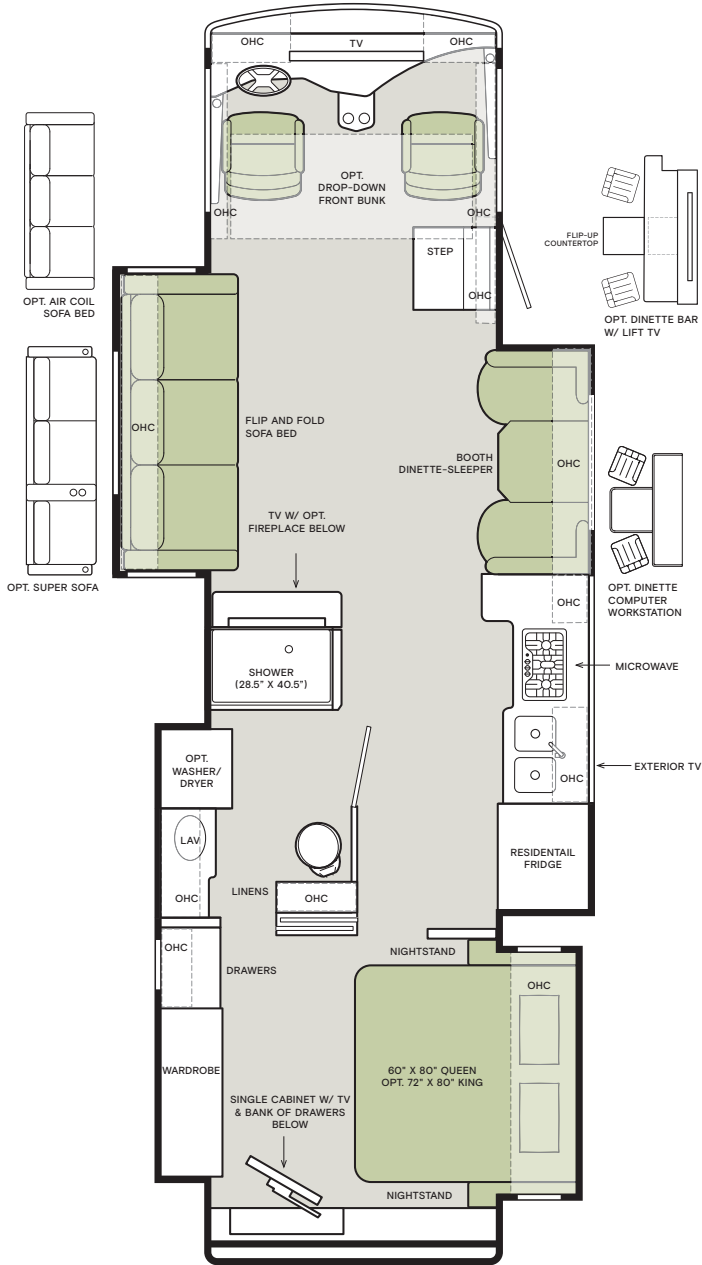
32 FA



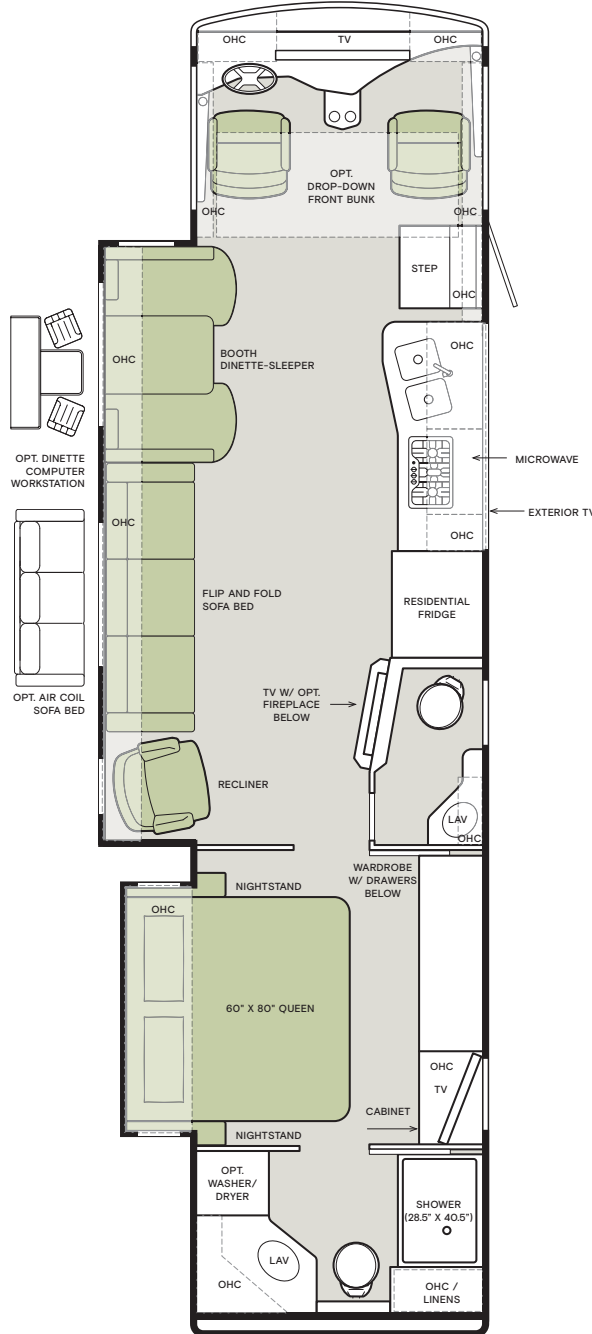
32 SA



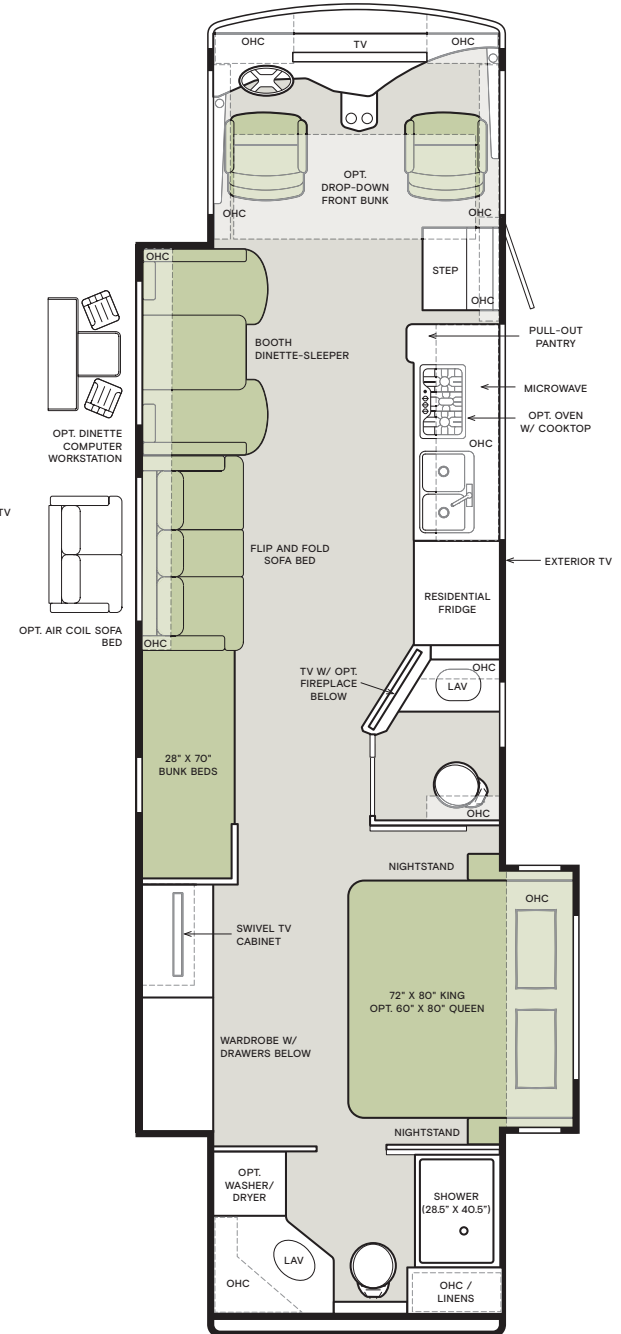
34 PA



36 LA



36 UA



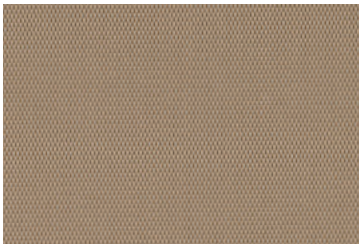
Interior Décor

Make your experience on the road all your own. Express yourself by choosing the interior appointments such as cabinet finishes, flooring, and décor ensembles for every part of your motorhome. In the 2023 Open Road, you'll be able to travel in style no matter where you go.



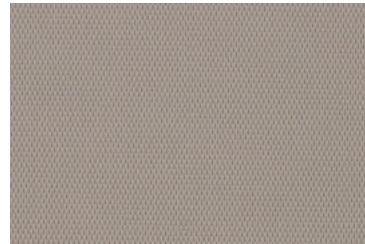
With high-performance functionality and ultimate comfort intertwined, Ultrafabrics® helps to create uniquely sensorial and colorful surroundings.

FURNITURE



TRAIL (S)

NEW



TAUPE HILL (O)

NEW

FLOORING



SEAGRASS Matte Finish Tile

NEW

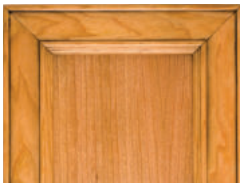
NO LONGER AVAILABLE

• City Shadow III

• Portico Linen II

• Sandbar III

CABINETS



AMBER GLAZED



SHADOW



NATURAL ALDER

Colors of interior décor options shown may vary from colors on actual product.

MOONDANCE

NEW



WINDOW TREATMENT



BACKSPLASH



COUNTERTOP



LIVING ROOM



MASTER SUITE

STONEWASHED

NEW



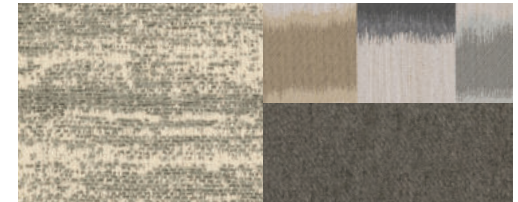
WINDOW TREATMENT



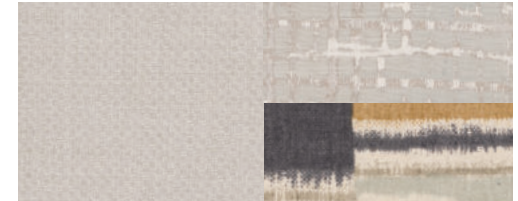
BACKSPLASH



COUNTERTOP



LIVING ROOM



MASTER SUITE

Specifications, Features, and Options

KEY : S : Standard Feature | O : Optional Feature; Additional costs may apply | D : Dependent; Availability is dependent on selection of another option | — : Not Available

WEIGHTS AND MEASURES	32 FA	32 SA	34 PA	36 LA	36 UA
DIMENSIONS					
Overall Length (approximately) ¹	34' 3"	34' 3"	36' 1"	37' 6"	38"
Overall Width ¹	101"	101"	101"	101"	101"
Overall Height	12' 10"	12' 10"	12' 10"	12' 10"	12' 10"
Minimum Garage Height	14'	14'	14'	14'	14'
Interior Height	84"	84"	84"	84"	84"
Interior Width	96"	96"	96"	96"	96"
Square Footage (approx.) ²	315	300	355	330	355
Basement Storage (cubic feet, approx.)	140	140	203	203	203
Wheel Base	228"	228"	252"	252"	252"
WEIGHT LIMITS					
GAWR-Front (pounds)	9,000	9,000	9,000	9,000	9,000
GAWR-Rear (pounds)	15,500	15,500	17,500	17,500	17,500
GVWR (pounds)	24,000	24,000	26,000	26,000	26,000
Hitch Rating (pounds)	5,000	5,000	5,000	5,000	5,000
Maximum Trailer Weight (pounds) ³	5,000	5,000	4,000	5,000	4,000
GCWR (pounds)	30,000	30,000	30,000	30,000	30,000
CAPACITIES					
Fuel Tank (gallons)	80	80	80	80	80
Fresh Water (gallons)	70	70	70	70	70
Grey Water (gallons)	66	66	66	66	66
Black Water (gallons)	50	50	50	50	50
LPG Tank (gallons) ⁴	24	24	24	24	24

¹ The approximated coach width and length does not include side-view mirrors and rear ladders.

² Square footage was calculated with the slide-outs fully extended.

³ Maximum Trailer Weight is dependent on the loading and towing variables which include the GVWR, GAWR, and GCWR, as well as adequate trailer brakes.

⁴ LPG tank can only be filled to 80% capacity.

CHASSIS AND DRIVETRAIN

- Ford® F-53 Super Duty® Class A Motorhome Chassis
- Ford® V8 7.3L 350 HP Gas Engine with 468 lb-ft Torque ¹
- 210-Amp Alternator
- TorqShift® 6-speed Automatic Overdrive with Tow/Haul Mode
- Aluminum Wheels
- Front and Rear 255/80R 22.5 Tires
- (1) 12-Volt Flooded Lead-Acid Chassis Batteries
- Hydraulic Leveling Jacks
- Custom Tuned Sachs® Shock Absorbers
- Front Radiator
- Front and Rear Disc Brakes
- Manual Parking Brake
- Automatic Traction Control
- Cruise Control

CHASSIS SPECIFICATIONS		32 FA	32 SA	34 PA	36 LA	36 UA
Suspension	Front and Rear Tapered Multi-leaf Suspension	S	S	S	S	S
	Front Tapered Multi-leaf Suspension with LiquidSprings® Rear Suspension	—	—	O	O	O

¹ Peak horsepower achieved at 3,900 RPM. Peak torque achieved at 3,900 RPM.

ELECTRICAL

- Liquid Propane (LP) Coach ¹
- Spyder Controls Multiplex System Featuring App Compatibility
- 2,000-Watt Pure Sine Wave Inverter with Auto-Gen Start and Interior Remote Control ²
- (4) 6-Volt Flooded Lead-Acid House Batteries
- Battery Slide-out Tray
- Extraordinaire™ Air Conditioning System
- 50-Amp Shore Power
- Prep for Satellite
- Auxiliary Solar Port
- Blu-ray™ Player
- Satellite Receiver
- Park Cable and Ground Satellite Hook-up
- HD Over-the-air Antenna ³
- 12-Volt Breaker Panel
- 12-Volt Disconnect Switch
- Rotary Disconnect Switches for House Batteries, Chassis Batteries, and Inverter
- Ground Fault Circuit Interrupter (GFCI) Outlets at Galley, Lavatories, and Sewer Bay
- 110-Volt Exterior Receptacle
- Surge Guard® Transfer Switch
- USB Receptacles Throughout Coach

ELECTRICAL OPTIONS

		32 FA	32 SA	34 PA	36 LA	36 UA
Generator	5.5-Kilowatt Onan® Quiet Gas Generator	S	S	S	—	—
	7.0-Kilowatt Onan® Quiet Gas Generator	O	O	O	S	S
Air Conditioning	(2) 13,500-BTU Air Conditioners	S	S	S	S	S
	(1) 13,500-BTU Air Conditioner and (1) 15,000-BTU Air Conditioner with Heat Pump ⁴	D	D	D	O	O
Heat Sources	(1) 35,000-BTU and (1) 30,000-BTU Ducted Furnaces	S	—	—	—	—
	(1) 35,000-BTU Ducted Furnace	—	S	—	—	—
	(1) 35,000-BTU and (1) 20,000-BTU Ducted Furnaces	—	—	S	—	—
	(1) 30,000-BTU and (1) 20,000-BTU Ducted Furnaces	—	—	—	S	S
In-motion Satellite Dish ⁵	O	O	O	O	O	
Prewiring for Winegard® Trav'ler™ Satellite ⁶	O	O	O	O	O	
Solar Panels	Prep for Solar Panels ⁷	O	O	O	O	O
	(1) 200-Watt Solar Panel with (1) 30-Amp Controller	O	O	O	O	O
	(2) 200-Watt Solar Panels with (1) 30-Amp Controller	O	O	O	O	O
Cellular Signal Booster	NEW	O	O	O	O	O
Wi-Fi Booster	UPDATED	O	O	O	O	O

¹ Propane is used to power the ducted furnaces, the water heater, and liquid propane cooktops.

² Automatic generator start capabilities controlled through Spyder Controls Multiplex System. 1,200-Watt inverter no longer available.

³ Requires subscription.

⁴ Option only available with 7.0-Kilowatt Onan® Quiet Gas Generator. 15,000-BTU air conditioner replaces the front 13,500-BTU air conditioner. Only the 15,000-BTU air conditioner has a heat pump.

⁵ In-motion Satellite Dish and Prewiring for Winegard® Trav'ler™ Satellite cannot be optioned together on 32 FA, 32 SA, or 34 PA. High-definition programming is not available on a domed satellite antenna unless you subscribe to DISH Network®.

⁶ In-motion Satellite Dish and Prewiring for Winegard® Trav'ler™ Satellite cannot be optioned together on 32 FA, 32 SA, or 34 PA.

⁷ Includes docking ports for aftermarket solar panels.

PLUMBING

- Truma AquaGo™ Comfort Instant Water Heater ¹
- Water Heater Bypass System
- Aqua View Showermiser™
- Water Filter
- Water Pump Switch Access from Spyder System and Sewer Bay Board
- Low-point Water Drain Lines
- Black Holding Tank Flush System
- Gravity Water Fill
- Heated Water and Holding Tank Compartment
- Tank Level Monitor System
- Centralized Exterior Sewer Bay with Gravity Black and Grey Evacuation Ports
- Exterior Rinse Hose with Shower Head
- Sewer Bay Hand Sanitizer and Paper Towel Holders

¹ Now controllable through the Truma control panel and the Spyder System control panels.

Specifications, Features, and Options (Cont'd)

KEY : S : Standard Feature | O : Optional Feature; Additional costs may apply | D : Dependent; Availability is dependent on selection of another option | - : Not Available

EXTERIOR

- Full-body Paint with (3) Layers of Clear Coat
- High Performance Protective Film on Front Cap and Select Areas
- (1) Girard® Side-mounted Powered Patio Awning with Integrated LED Lighting
- Girard® Slide-out Toppers
- Side-swinging Exterior Storage Doors with Gas Shocks
- Lockable Handles on Compartment Doors
- Motion-sensor Lights in Cargo Bay
- 120-Volt and 12-Volt Outlets Inside Cargo Bays
- Framed, Single-Pane Windows
- Exterior Patio Light
- Daytime Running Lights
- Chrome Power Heated Side-View Mirrors with Integrated Cameras
- Exterior TV with Soundbar
- Fast Charge USB ports within Exterior TV Compartment
- Manual Exterior TV Compartment Door
- Entry Door Grab Handle
- Deadbolt Front Entrance Lock
- Automatic Double Entry Step
- Mud Flaps
- Single-colored Slide-out Endwalls
- Limited Edition 50th Anniversary Decal **NEW**

EXTERIOR OPTIONS	32 FA	32 SA	34 PA	36 LA	36 UA
Lippert™ On-The-Go Ladder ¹ NEW	O	O	O	O	O

¹ All units will ship with a Lippert™ On-The-Go™ Prepped Receiver installed.

INTERIOR

- Handcrafted Cabinet Fascias and Doors with Concealed Hinges
- (2) Flat-panel Televisions¹
- Solid Surface Galley Countertop
- Treated Carpet in Slide-out Floors
- Handcrafted Slide-out Fascia
- Soft Touch Vinyl Ceiling
- LED Lighting
- Carbon Monoxide Detector
- LPG Leak Detector
- Smoke Detector
- Fire Extinguisher
- Solar and Privacy Shades
- Soft-closing Drawer Slides
- Powered Roof Vents
- Interior Grab Handle at Entry Door

INTERIOR OPTIONS	32 FA	32 SA	34 PA	36 LA	36 UA
Treated Fabric Suites ²	Moondance NEW	O	O	O	O
	Stonewashed NEW	O	O	O	O
Ultraleathers ³	Taupe Hill NEW	O	O	O	O
	Trail NEW	O	O	O	O
Handcrafted Cabinetry	Amber Glazed	O	O	O	O
	Natural Alder	O	O	O	O
	Shadow	O	O	O	O
Floor Tile ⁴	Sea Grass Luxury Vinyl Tile NEW	S	S	S	S
Washer & Dryer	Prep for Washer and Dryer	-	S	S	S
	Combo Washer-Dryer	-	O	-	-
	Stacked Washer and Dryer	-	-	O	O
Central Vacuum System	O	O	O	O	O

¹ Located in living area and bedroom.

² City Shadow III, Portico Linen II, and Sandbar III are no longer available.

³ Belgian and Cocoon are no longer available.

⁴ Sand Castle is no longer available.

DRIVER'S COMPARTMENT

- Ultraleather Power Driver and Passenger Seats
- Adjustable Seatbelt Brackets
- Tilt and Telescoping Steering Wheel with Integrated Controls
- Backlit Instrument Cluster
- Dual Dash Fans
- USB Dash Receptacles
- Storage Drawer in Dash
- 12-Volt Dash Receptacle
- Contemporary Dash
- Cupholders on Driver and Passenger Side
- Built-in Driver and Passenger Consoles with Rocker Switches
- Driver and Passenger Map Lights
- One-piece Panoramic Windshield
- Single-motor Intermittent Windshield Wipers
- Automatic LED Headlights
- Ceiling Mounted Speakers
- Stereo with AM & FM Radio, CD Player, and Satellite Radio¹
- Side-view Cameras²
- Color Back-up Camera with Monitor
- Driver's Compartment Overhead Cabinets with Decorative Glass in Doors **NEW**
- Auxiliary Start Switch
- Manual, Horizontal Opening Driver and Passenger Side Windows
- Powered Solar and Privacy Windshield Shade
- Carpeted Step Well with Composite Steps
- Storage Compartment Within Entry Steps

DRIVER'S COMPARTMENT OPTIONS	32 FA	32 SA	34 PA	36 LA	36 UA
Passenger Seat Footrest	O	O	O	O	O
In-dash Navigation System	O	O	O	O	O
CB Antenna	O	O	O	O	O
Front Overhead Drop-Down Bunk ³	O	O	O	O	O
Front Overhead TV	O	O	O	O	O

¹ Subscription required for satellite radio.

² Integrated within side-view mirrors and activated by turn signals.

³ Drop-down bunk sleeps one comfortably and will decrease overhead storage capacity. Maximum weight limit of drop-down bunk is 250 pounds.

DINETTE AND LIVING AREA

	32 FA	32 SA	34 PA	36 LA	36 UA	
Driver Side Dinette	Dinette Bar with Lift TV	S	-	-	-	
	Dinette Computer Workstation with Lift TV ¹ UPDATED	O	-	-	-	
	Ultraleather Booth Dinette-Sleeper ² UPDATED	-	S	-	S	S
	Dinette Computer Workstation ¹ UPDATED	-	O	-	O	O
	Overhead Dinette Cabinets	-	S	-	S	S
Driver Side Furniture	Bunk Beds (28" x 70") ³	S	-	-	-	S
	Ultraleather Flip and Fold Sofa Bed ³	-	S	S	-	S
	Ultraleather Air Coil Sofa Bed ³	-	O	O	-	O
	Ultraleather Super Sofa ³	-	-	O	-	-
	Ultraleather Flip and Fold Sofa Bed and Ultraleather Recliner ³	-	-	-	S	-
	Ultraleather Air Coil Sofa and Ultraleather Recliner ³	-	-	-	O	-
	Mounted Flat-panel TV ⁴	-	-	D	-	-
Fireplace	-	-	O	-	-	
Passenger Side Dinette	Ultraleather Booth Dinette-Sleeper ² UPDATED	-	-	S	-	-
	Dinette Computer Workstation ¹ UPDATED	-	-	O	-	-
	Dinette Bar with Lift TV ⁵	-	-	O	-	-
	Overhead Dinette Cabinets ⁴	-	-	D	-	-
Passenger Side Furniture	Ultraleather Flip and Fold Sofa Bed ³	S	-	-	-	-
	Mounted Flat-panel TV	-	S	-	S	S
	Fireplace	-	O	-	O	O

¹ The printer bump-out was removed for more leg room. The keyboard and printer trays have been converted to a drawer and a fixed shelf to maximize storage.

² Piece of furniture sleeps one comfortably. Now with lift-up seat storage access. Includes forward-facing seatbelts.

³ Piece of furniture sleeps two comfortably.

⁴ Not available when lift TV is optioned.

⁵ Replaces mounted flat-panel TV.

Specifications, Features, and Options (Cont'd)

KEY : S : Standard Feature | O : Optional Feature; Additional costs may apply | D : Dependent; Availability is dependent on selection of another option | — : Not Available

KITCHEN

- Stainless Steel Convection Microwave with Exterior Venting
- Double Bowl Kitchen Sink with Single Lever Faucet and Pull-down Sprayer
- Panoramic Galley Window
- LED Countertop Lighting
- Full Tile Backsplash
- Solid Surface Galley Countertop, Sink, and Cooktop Cover

KITCHEN OPTIONS		32 SA	32 SA	34 PA	36 LA	36 UA
Refrigerator	20-Cubic Foot Stainless Steel Residential Refrigerator with Top Freezer ¹	S	S	—	S	S
	23-Cubic Foot Stainless Steel Residential Refrigerator with French Doors and Bottom Freezer ¹	—	—	S	—	—
Cooking Appliances	Three-Burner Liquid Propane Cooktop	S	S	S	S	S
	Oven Range with Liquid Propane Cooktop	O	O	O	O	O

¹ Refrigerator volume is approximated.

BEDROOM

- Overhead Cabinets
- Under Bed Storage
- Bedside Windows
- Bed Comforter with Throw Pillows
- Strategically Placed, Handcrafted Privacy Door
- LED Reading Lights
- Nightstand with Solid Surface Tops
- Mounted Flat-panel TV
- Centralized Entertainment Center ¹
- Wardrobe with Drawers Underneath
- Laundry Hamper

BEDROOM OPTIONS		32 FA	32 SA	34 PA	36 LA	36 UA
Mattress	Memory Foam King Mattress (72" x 80")	S	S	O	—	S
	Memory Foam Queen Mattress (60" x 80")	O	O	S	S	O
Bed Slide	Mounted Headboard	S	—	S	S	—
	Window at Head of Bed	—	S	—	—	S
Ceiling Fan		O	O	O	O	O

¹ Houses Blu-ray™ player, satellite receiver, and cable TV hook-up.

BATHROOM

- (1) Porcelain Master Bathroom Sink
- Solid Surface Lavatory Top
- Handheld Shower Head with Slide Bar
- Shower Skylight
- Shower LED Light with Sliding Cover
- Towel and Toilet Paper Holders
- Mirrored Medicine Cabinet
- Roof Vent Fan

BATHROOM OPTIONS		32 FA	32 SA	34 PA	36 LA	36 UA
Number of Bathrooms	(1) Bathroom	S	S	S	—	—
	(1) Bathroom and (1) Half-bath ¹	—	—	—	S	S
Shower	UPDATED One-Piece Molded Fiberglass Shower ² (34.5" x 34.5")	S	—	—	—	—
	One-Piece Molded Fiberglass Shower ² (28.5" x 40.5")	—	S	S	S	S
Toilet	(1) Gravity Flush Toilet	S	S	S	—	—
	(1) Gravity Flush Toilet and (1) Macerator Toilet	—	—	—	S	S

¹ All half-baths contain a toilet and a solid surface countertop with a single porcelain sink.

² Added foot ledge and removed molded-in shower seats to allow for more room.

Because of progressive improvements and specifications, standard and optional equipment are subject to change without notice or obligation. For a complete and up-to-date list of available options and specifications, visit tiffinmotorhomes.com.

WHAT'S NEW

- Two New Fabric Suites (Moondance & Stonewashed)
- Two New Ultraleather Colors (Trail & Taupe Hills)
- Sea Grass Luxury Vinyl Tile
- 50th Anniversary Decal
- Frosted Granite Exterior Paint Color Package in Generation 9 & 10
- Foot Ledge in Shower
- 50th Anniversary Exterior Paint Color Package in Generation 10 Only
- Updated Dinette Boothe Seating for Lift Up Seat Storage Access
- New Wi-Fi Booster
- Cellular Signal Booster Now Available
- Updated Decorative Glass for Driver's Compartment Overhead Cabinets
- Truma AquaGo™ Comfort Instant Water Heater Now Standard; Now Can Be Controlled Through the Spyder System Control Panels
- Residential Refrigerator Now Standard
- New 14.5' Lippert™ On-The-Go™ Ladder
- Updated Dinette Computer Workstation Option
- 2,000-Watt Inverter Now Standard
- Solid Surface Upgrade (Dinette and Mantle) Now Standard

NO LONGER AVAILABLE

- City Shadow III, Portico Linen II, & Sandbar III Fabric Suites
- Belgian and Cocoon Ultraleather Colors
- Sand Castle Luxury Vinyl Tile
- 22,000 pound GVWR Chassis
- 6-gallon DSI Gas/Electric Water Heater
- 10-gallon DSI Gas/Electric Water Heater
- Gas/Electric Refrigerator
- L-Shapes Sofa Furniture Options
- 1,200-Watt Inverter
- Molded-in Shower Seats



©2023 Tiffin Motorhomes, Inc. Allegro®, Allegro Breeze®, Allegro RED®, Phaeton®, Allegro Bus®, Zephyr®, Wayfarer®, Roughing It Smoothly®, Open Road®, PowerGlide®, and Cahaba® are registered trademarks of Tiffin Motorhomes, Inc. All rights reserved. For all information concerning the limited warranty provided by Tiffin, please refer to the full written limited warranty set forth on the Tiffin website or held by our authorized dealerships. Please note, some interior furnishings not included. Revised: 02/21/23

